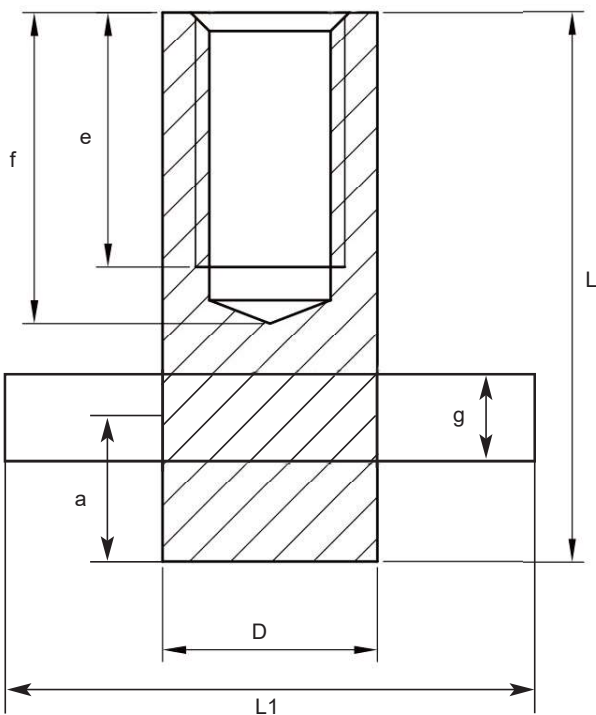


Solid Rod Fixing Sockets with Crossbar

figure 36



Machined from solid rod and offering a heavy wall construction, in either a zinc plated finish or stainless steel grade 304. This socket offers higher fixing capacities than its equivalent thread diameter standard fixing socket. Whilst the crossbar does not increase the fixing capacity of the Solid Rod Fixing Socket it offers improved anchorage in cracked or honeycombed concrete. The minimum design strength for surrounding concrete should be 30 N/mm².

See figure 36 and table 34 for specific dimensions.

Please note these sockets are not suitable for lifting operations.

table 34
Solid Rod Fixing Socket with Crossbar

Product Code	Thread Dia. (M)	L (mm)	D (mm)	g (mm)	L1 (mm)	a (mm)	e (mm)	f (mm)	Tension Load (kN)	Shear Load (kN)
SSRCP1060	10	60	16	6	50	10.0	35	40	6.0	4.0
SSRCP1250	12	50	20	10	75	12.0	22	28	9.0	5.6
SSRCP1275	12	75	20	10	75	12.0	40	46	9.0	5.6
SSRCP1675	16	75	22	10	75	14.5	40	45	17.0	11.0
SSRCP16100	16	100	22	10	75	14.5	65	70	17.0	11.0
SSRCP2075	20	75	28	12	90	18.5	35	40	23.0	17.0
SSRCP20100	20	100	28	12	90	18.5	60	65	23.0	17.0
SSRCP24100	24	100	35	16	100	20.0	55	60	30.0	24.0

