

# Cast-in Device FCiD Plus



# Cast-in Devices from **fischer**



**fischer Cast in Device  
FCiD Plus 100**

**&**

**Manifold Recess Former  
FCiD Plus MRF**



**Together =**

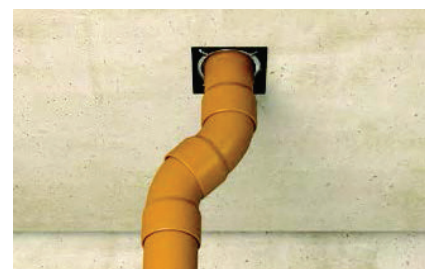
- Quick installation
- Watertight seal
- No further collars or wraps required
- Reduce working at heights
- Cost Saving

# Cast-in Device FCiD Plus

Fast and efficient solution for forming service penetrations through concrete floors



FCiD Plus within reinforced concrete floor



Installed pipe through FCiD Plus

### Applications

- Sealing and firestopping combustible and metal pipes up to 168 mm.
- Forms holes up to 200mm thick concrete floors. Can be used in thicker floor slabs by addition of 100mm extension tubes.
- Sealing and firestopping insulated pipes, cable bundles and multiple pipes.
- Fire rating applicable even without any through penetrants if placed wrong or penetrant's location is changed.

### Advantages

- Quick installation
- Easy to use locator plate
- Watertight seal
- Higher tolerance
- Easily extendable
- Wider base for further connections
- No further collars or wraps required
- Reduce working at heights
- Cost saving
- Reduced foot plate
- Closer proximity positioning
- Free of asbestos, solvents and any hazardous ingredients.

### Function

- FCiD Plus is a pass through system, which is constructed from a highly resilient polypropylene material and contains a powerful intumescent graphite band.
- The FCiD Plus is rugged enough to withstand the force and load of a concrete pour, yet lightweight enough to permit easy placement and handling.

### Certificates

**EN 1366-3 : 2021**

Fire resistance tests for service installations penetration seals.

**ASTM E 814 (UL 1479).**

**BS 476-20**



### Building Materials

- Reinforced cast concrete slabs
- Some prefabricated slab systems (subject to design).
- Metal decking concrete composite slabs

### Resistance table

Penetrant	FCiD Plus size	Diameter of penetrant (mm)	Max Fire Resistance (min.)	
			Integrity	Insulation
Blank	-	-	180	180
PVC-U	150	160	240	240
PVC-U	100	110	240	240
PVC-U	75	75	120	120
PVC-U	75	63	120	120
PVC-U	50	50	180	180
Metal pipe	50, 75, 100, 150	50, 75, 100, 150, Steel Schedule 5, Copper Type L and Regular	180	180
PVC, PVC-XFR, (RNC)+	50, 75, 100	60, 90, 114	180	180
PVC, PVC-XFR, (RNC)+	150	168	180	165
CPVC	50	60	180	180
CPVC	75	90	180	135
CPVC	100	114	180	135
CPVC	100	114	180	165
PEX tubing	50	54	180	-
PP-R	50	63	180	180
PP-R	75	90	180	-
PP-R	100	125	180	-
Cable bundle	50, 75, 100, 150	25 to 152	180	45
Insulated Metal pipe	50, 75, 100	Max. 150 (Max. 25 insulation)	180	120
Multiple pipes (cc PVC, PEX & metal)	50, 75, 100, 150	Max. 3 no of 38mm	120	60

**Important Note:** Please refer to product test and assessment reports for accurate assembly details and fire ratings.

# Cast-in Device FCiD Plus

**Technical data**

Item	Item No.	VJ Item No. [mm]	Fits pipe-Ø [mm]	Height H [mm]	Sales unit [pcs]
FCiD Plus 50	566285	30001500	50 - 63	200	12
FCiD Plus 75	566286	30001510	63 - 90	200	12
FCiD Plus 100	566287	30001520	100 - 125	200	12
FCiD Plus 150	566288	30001530	150 - 168	200	6
FCiD Plus 50 extension	566289	30001540	50 - 63	100	6
FCiD Plus 75 extension	566290	30001550	63 - 90	100	6
FCiD Plus 100 extension	566291	30001560	100 - 125	100	6
FCiD Plus 150 extension	566292	30001570	150 - 168	100	6
FCiD Plus 50 deck adapter	566293	On request	-	-	1
FCiD Plus 75 deck adapter	566294	On request	-	-	1
FCiD Plus 100 deck adapter	566295	On request	-	-	1
FCiD Plus 150 deck adapter	566296	On request	-	-	1
FCiD Plus 75 Locator Plate	-	30001660	-	-	1
FCiD Plus 100 Locator Plate	-	30001670	-	-	1
FCiD Plus 150 Locator Plate	-	30001680	-	-	1
FCiD Plus 50 extension 50	-	30001580	-	50	1
FCiD Plus 75 extension 50	-	30001590	-	50	1
FCiD Plus 100 extension 50	-	30001600	-	50	1
FCiD Plus 150 extension 50	-	30001610	-	50	1
FCiD Plus 50 extension 25	-	30001620	-	25	1
FCiD Plus 75 extension 25	-	30001630	-	25	1
FCiD Plus 100 extension 25	-	30001640	-	25	1
FCiD Plus 150 extension 25	-	30001650	-	25	1
FCiD Plus-MRF for FCiD Plus 100	580758	30001690	100-125	60	1

Device and extension tube can be cut to suit concrete slab. This cutting service is provided by VJT on request.

**Technical data**

State	solid
Odour	odourless
Fire resistance	<b>Up to 4 hours - EN 1366-3 &amp; BS476-20 &amp; UL 1479</b>
Extension or reduction in height possible	Yes
Standard flange width	min 154 mm and max 254 mm
Significant expansion occurs at temperature	> 190 °C
Shelf life	n/a
Colour	black



FCiD Plus Extension



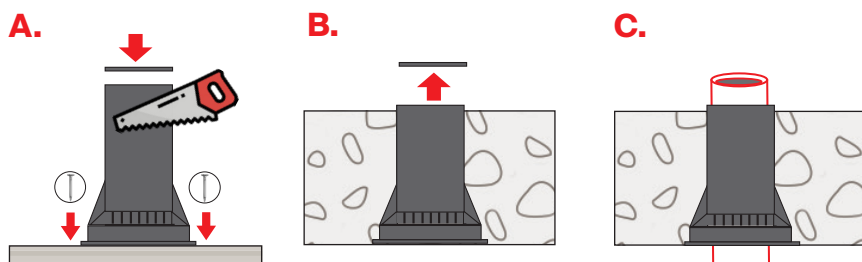
FCiD Deck adapter kit



FCiD MRF Manifold  
recess former for FCiD Plus 100

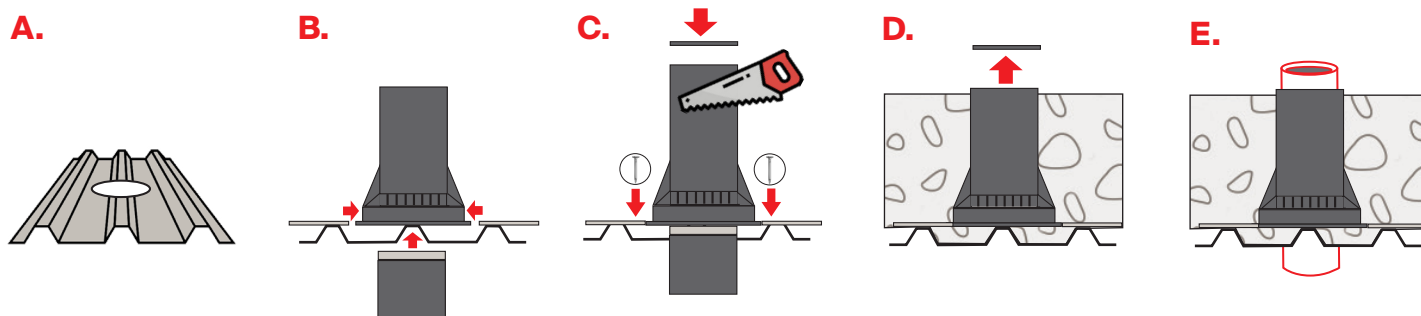
# FCiD Plus Cast-in Device Installation Instructions

## FCiD Plus Cast-in Device installation



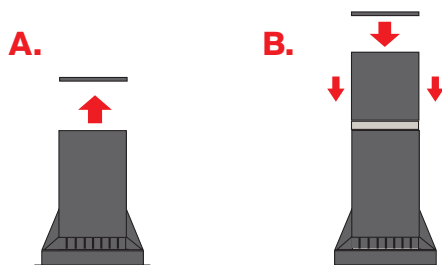
- A.** 1. Select FCiD to fit the diameter of the penetrant being used, assuring annular space is within limits set by tested conditions. Lay the FCiD on concrete forms or metal deck, and secure with nails or screws through fastening holes on the bottom of the flange. FCiD alignment connectors allow tight placement of multiple penetrations. If finished concrete is lower than the height of the FCiD, cut to finished pour height. Use a suitable non-heat generating cutting tool to cut the FCiD to the correct height.  
2. Before pouring concrete, ensure the top cap of the FCiD is secure to prevent the flow of concrete entering the FCiD
- B.** 3. Once the concrete is cured, remove the FCiD cap before use.
- C.** 4. The FCiD is now ready for the insertion of pipe applications

## FCiD Plus Cast-in Device Metal Adapter installation



- A.** 1. For metal decking applications, cut a hole in the corrugated deck to fit the pipe or penetration.
- B.** 2. Use the metal deck adapter kit to install the FCiD plus by attaching the deck support to the bottom rim, then insert the extension tube through the underside.
- C.** 3. Insert the extension tube through the precut hole in the decking and fasten the decking supports to the deck with screws. Ensure the tube is sealed to prevent any concrete entering through the decking. If finished height of concrete is lower than the height of the device, cut to finished pour level. Use a suitable non-heat generating cutting tool to cut the device to the correct height. Before pouring concrete, ensure the top cap of the FCiD Plus is securely in place to prevent concrete flowing through.
- D.** 4. Once the concrete is cured, remove the FCiD cap for use.
- E.** 5. The FCiD is now ready for the insertion of pipe applications.

## FCiD Plus Cast-in Device Height Extension installation / Locator Plate Installation (Optional)



- A.** 1. Remove the cap from the device. Insert appropriate size extension/s onto the FCiD Plus device aligning connector tabs from the FCiD with extension receiving slots.  
2. Attach additional extensions to reach the desired height and place the FCiD cap back on before pouring concrete.
- B.** 1. Place the matching size locator plate to the exact location by aligning the center hole to the center of the marked pipe location on concrete shuttering.  
2. Fix the locator plate to the shuttering by using nails or screws through the holes.  
3. Fit the FCiD Plus Cast-in Device on the locator plate and follow regular instruction steps (Figure 1.)

**Important note:** Please do NOT use the device if rubber strip or intumescent strip is damaged and contact fischer technical support services: [technical-uk@fischer.co.uk](mailto:technical-uk@fischer.co.uk)

# FCiD Plus Cast-in Device with MRF Manifold Recess Former

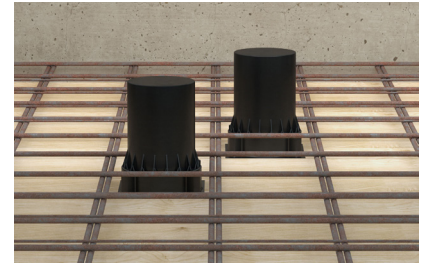
Quick and efficient solution for forming service penetrations through concrete floors



FCiD Plus MRF



FCiD Plus MRF with FCiD Plus 100



FCiD Plus within reinforced concrete floor



Installed pipe through FCiD Plus

### Applications

- Sealing and firestopping pipes up to 125mm.
- Forms holes up to 260mm thick concrete floors. Can be used in thicker floors by addition of extension tubes.
- Manifold units in wet room applications

### Advantages

- Quick installation
- Watertight seal
- Higher tolerance
- Easily extendable
- Wider base for further connections
- No further collars or wraps required
- Reduce working at heights
- Cost saving
- Reduced foot plate
- Eco-friendly extension tube
- Closer proximity positioning
- Free of asbestos, solvents and any hazardous ingredients.

### Function

- FCiD Plus is a pass through system, which is constructed from a highly resilient polypropylene material and contains a powerful intumescent graphite band.
- The FCiD Plus is rugged enough to withstand the force and load of a concrete pour, yet lightweight enough to permit easy placement and handling.

### Building Materials

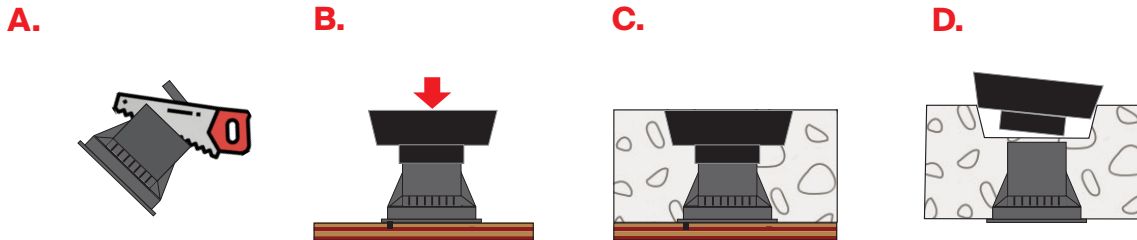
- Reinforced cast concrete slabs
- Some prefabricated slab systems (subject to design)

### Technical data

Item	Item No.	VJ Item No.	Fits pipe-Ø	Height H	Sales unit
		[mm]	[mm]	[mm]	[pcs]
FCiD Plus-MRF for FCiD Plus 100	580758	30001690	100-125	60	1

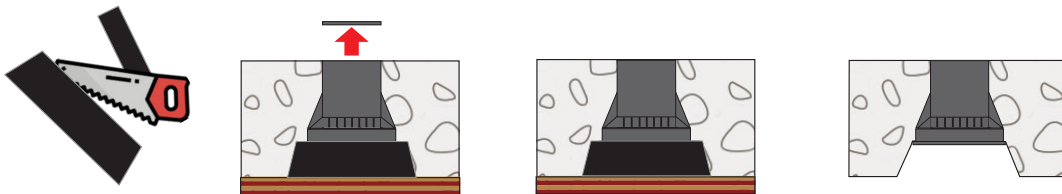
# FCiD Plus with MRF Manifold Recess Former Installation Instructions

## MRF Top Recess Installation



- A.** 1. Adjust device height by cutting or adding extensions, fix it to concrete shuttering and remove the cap.
- B.** 2. Fit the MRF into the device.
- C.** 3. Pour concrete flush with the MRF (or planned height).
- D.** 4. Remove the MRF after concrete is hardened and place pipe, drain or other equipment.

## MRF Underside Recess Installation



- A.** 1. Cut and remove the circular pipe flashing part of the MRF.
- B.** 2. Place the MRF to its position and fasten to concrete shuttering. Place and fix the device on the MRF.
- C.** 3. Pour concrete
- D.** 4. Remove the MRF and cap of the device after concrete is hardened and place pipe, drain or other equipment.

**fischer**  
**Exclusive Distributor**

**VJT Head Office**

**Phone:**

Sales 01233 652 550

Technical 01233 652 520

**Email:**

ashford@vjtechnology.com

Datasheet and Product Information Requests:

technical@vjtechnology.com

**Opening Hours:**

Mon-Fri 8am-5pm

**Address**

Technology House,  
Brunswick Road,  
Ashford, Kent,  
TN23 1EN

**VJT Trade Counter**

Ashford Opening Hours:

Mon-Fri 7am-5pm

Sat 8am-12 noon



[www.fischer.co.uk](http://www.fischer.co.uk)



fischer fixings UK Ltd.

Whitely Road, Wallingford, Oxon, OX109AT.

Tel. 01491 827900 · Fax 01491 827953

sales@fischer.co.uk · technical-uk@fischer.co.uk · [www.fischer.co.uk](http://www.fischer.co.uk)