

VJT Combination Padlock Instructions



28200976

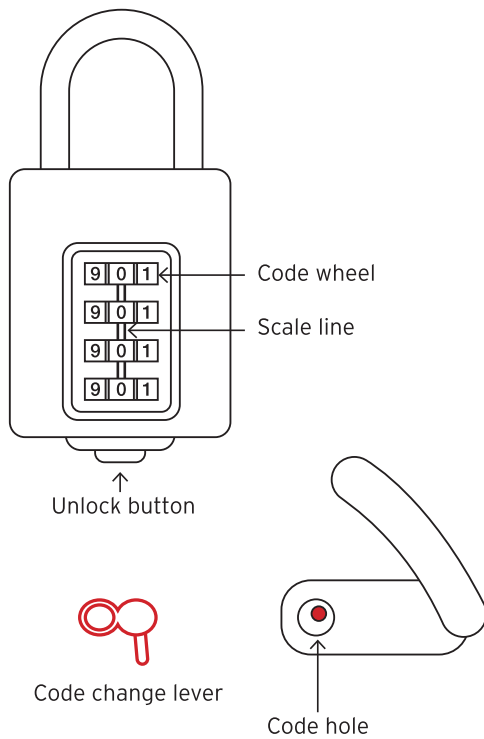
How to use

Unlock

Dial the password, press the bottom button to pop up the lock beam, and the product opens.

Close the lock

Dial the password, press the lock beam, and then dial the password to lock the product.



Page 1

VJT Combination Padlock Instructions

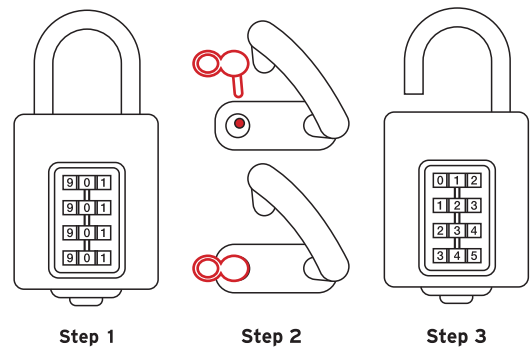


28200976

Set password

You need to set a new password for the first use. Please envision a password that needs to be set first. The unified original password of the factory product is "0-0-0-0".

1. First turn the code wheel to 0-0-0-0, and then press the bottom button to pop up the lock beam.
2. Use a plastic code change lever to insert it into the code hole, press it firmly and do not loosen it. Turn the password again to the password position you need to set, and to align the tick marks.
3. Take out the code change lever, the password setting is completed.



MADE IN CHINA

V1.0/SIN/CPI/26

Importer: Sinops Limited

VJ Technology Limited

Technology House, Brunswick Road, Cobbs Wood Industrial Estate, Ashford, Kent TN23 1EN

Tel 01233 637695 | Email enquiries@vjtechnology.com

www.vjtechnology.com

Page 2

180.00 mm

80.00 mm