

# GRIPPS®

ANSI/ISEA  
121-2023  
COMPLIANT

## H01030 SCREWLOCK CABLE - 3MM X 120MM

1 KG

2.2 LB

MAX LOAD:

*The GRIPPS® Screwlock Cable offers a swift, effortless, and economical solution for establishing a certified, load-rated connection point for tools with existing holes. Composed of aircraft-grade steel, the GRIPPS® Screwlock Cable guarantees reliability and durability.*

With a core band made from aircraft-grade steel, the load-rated and certified GRIPPS® Screwlock Cable is as dependable as it is hard-wearing.

Create your secure tool connection point by simply threading the GRIPPS® Screwlock Cable through a suitable existing hang-hole/slot in your tool and screw closed. Add a drop of thread-locking compound before you screw shut to create a permanent load-rated connection point on your tools.

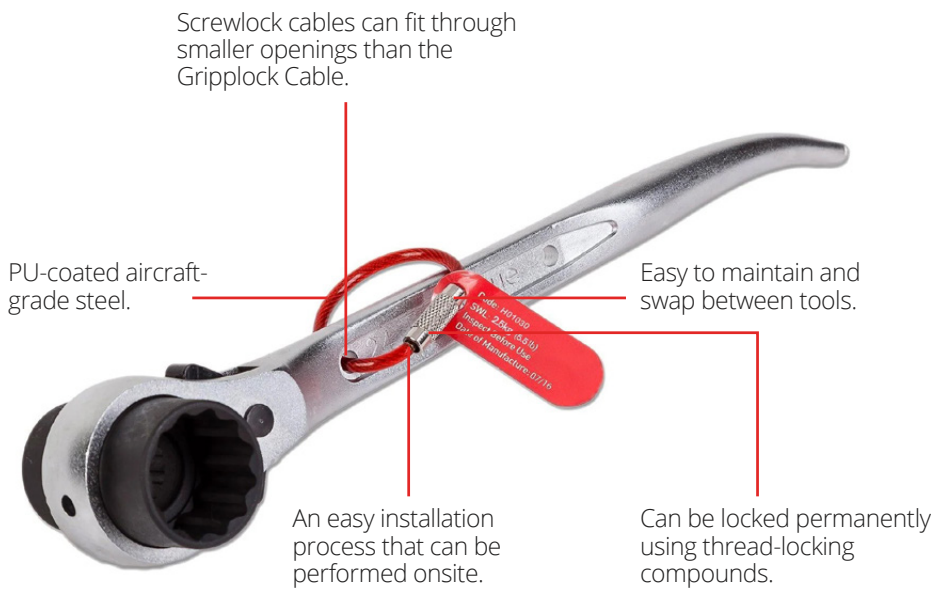
Available in packs of 5 and 10.



ENGINEERED FOR DROP PREVENTION

[gripps.com](http://gripps.com)

## KEY FEATURES

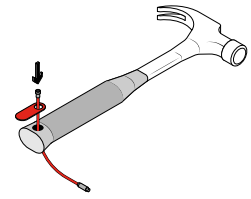


\*Available in four sizes.

## SPECIFICATIONS

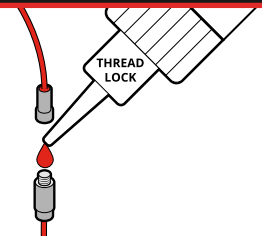
SKU	MAX LOAD	WIDTH	LENGTH
H01030-5 H01030-10	1 kg   2.2 lb	3 mm   1 in	120 mm   4.75 in
H01031-5 H01031-10	1 kg   2.2 lb	3 mm   1 in	150 mm   6 in
H01032-5 H01032-10	2 kg   4.4 lb	4 mm   0.15in	160 mm   6.25 in
H01033-5 H01033-10	2 kg   4.4 lb	4 mm   0.15in	200 mm   7.87 in

1



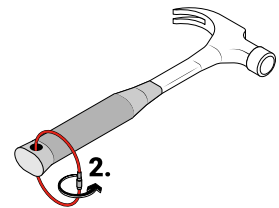
Thread the Screwlock Cable through the pre-formed hole in the tool.

2



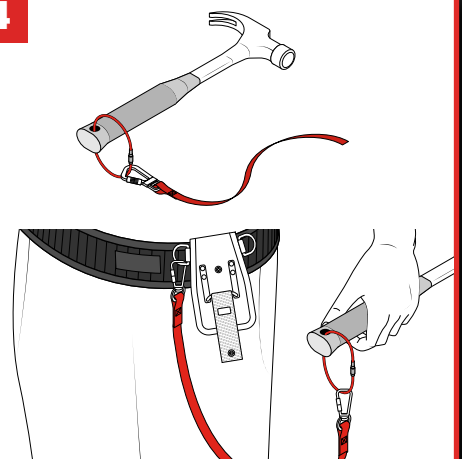
Squeeze a drop of thread-locking compound onto thread for a permanent connection point.

3



Screw the two ends together, ensuring they are fully screwed in and the threads haven't crossed.

4



Your Screwlock Cable is now ready to connect with a suitable load-rated GRIPPS® tether.

@GRIPPSGLOBAL



#ConquerGravity