

GRIPPS®

ANSI/ISEA
121-2023
COMPLIANT

H01142 BELT-LOOP ANCHOR

The GRIPPS® Belt-Loop Anchor creates an instant load-rated tether anchor on your work belt. Made from abrasion-resistant webbing, the GRIPPS® Belt-Loop Anchor is extremely hard-wearing.

Compatible with all 50mm/2" work belts, the GRIPPS® Belt-Loop Anchor creates an instant load-rated tether anchor on your work belt. Made from the same abrasion-resistant webbing as the GRIPPS® Webbing Tether Range, the GRIPPS® Belt-Loop Anchor is extremely hard-wearing.

Simply thread your work belt through the GRIPPS® Belt-Loop Anchor and connect your tether to the D-ring.



2.5_{KG}

5.5_{LB}

MAX LOAD



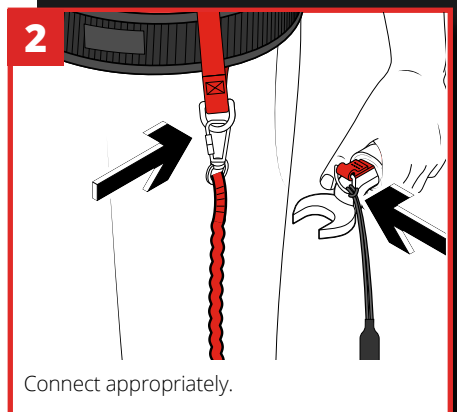
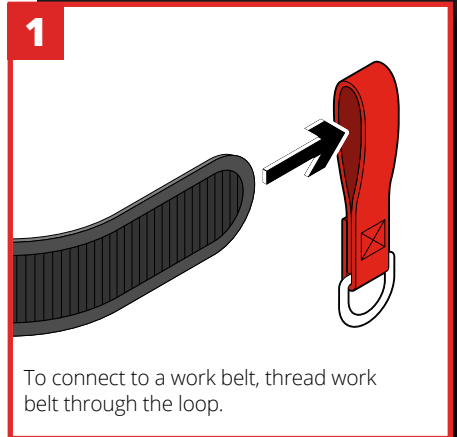
ENGINEERED FOR DROP PREVENTION

gripps.com

HOW TO USE

KEY FEATURES

Compatible with all standard work belt sizes.



SPECIFICATIONS

SKU	MAX LOAD (D-RING)	MAX TETHER LENGTH
H01142	2.5 kg 5.5 lb	1.3 m 51.18 in