

GRIPPS®

**ANSI/ISEA
121-2023
COMPLIANT**

H02070 SINGLE TOOL HOLSTER

2.5_{KG} 5.5_{LB}

MAX LOAD (D-RING):

Compatible with all standard work belts, the GRIPPS® Single Tool Holster boasts a lightweight yet durable design built for industrial toughness.

It includes a convenient drain hole and the option for a horizontal-release retractor unit, enhancing versatility and functionality on the job.



ENGINEERED FOR DROP PREVENTION

gripps.com

KEY FEATURES

Compatible with all standard work belts

Lightweight design with industrial toughness.

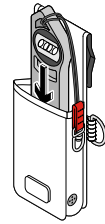


2 x load-rated D-Rings.

Drain hole.

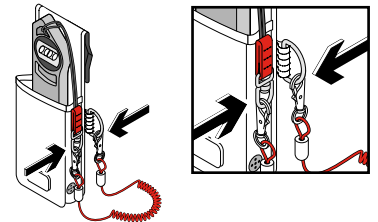
HOW TO USE

1



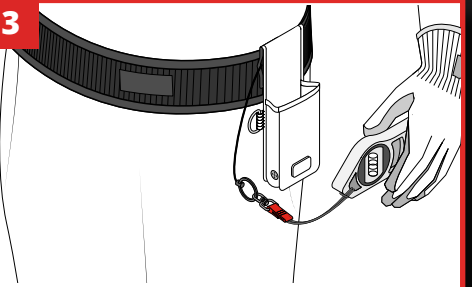
Insert tool and connect tool to the Retractor.

2



Connect tool to the Retractor or side D-Rings.

3



Your Single Tool Holster is now ready to use.

SPECIFICATIONS

SKU	MAX LOAD (D-RING)	MAX LOAD (RETRACTOR)	MAX LENGTH (RETRACTOR)
H02070	2.5 kg 5.5 lb	0.7 kg 1.5 lb	1.2 m 47 in