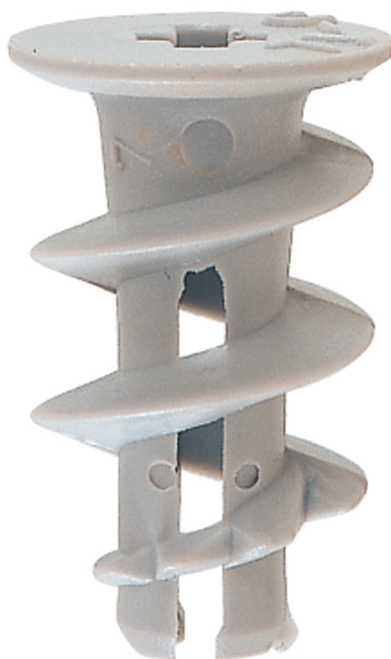


## The fastest installation in gypsum plasterboard

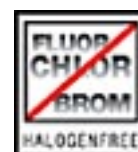


### BUILDING MATERIALS

- Gypsum plasterboard, single and double-planked



### APPROVALS



### ADVANTAGES

- The included setting tool combines the drilling and fixing setting functions. It thus allows for a fast and simple installation.
- The sharp, self-tapping thread of the GK enables a secure, positive fit fixing. This achieves a high load-bearing capacity.
- The short fixing length means that only a small amount of space is required behind the board. As a result, the GK can also be used in the case of unknown board thickness and cavity depth.
- The cross-drive recess in the head of the fixing means that the GK can also be screwed out like a screw without a setting tool.
- The GK can be used with the most wide-ranging screws, hooks and eye screws. This allows for a broad range of applications.

### APPLICATIONS

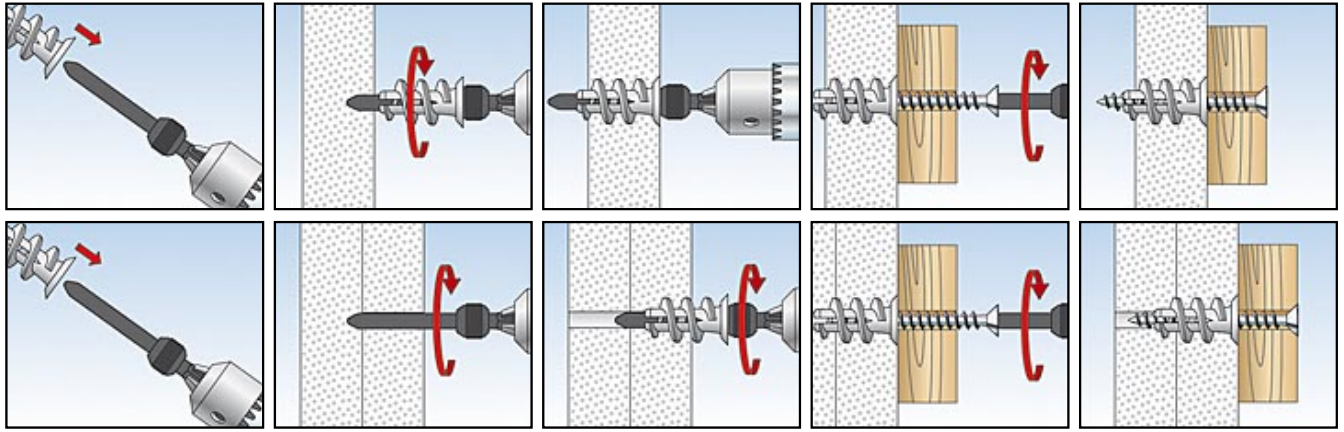
- Pictures
- Lighting
- Electrical installations
- Fitting accessories

#### Ideal for:

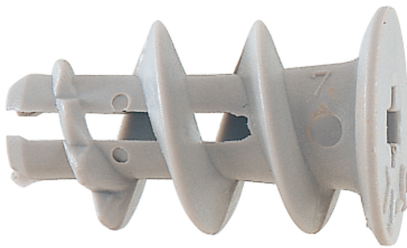
- Series installations

### FUNCTIONING

- The gypsum plasterboard fixing GK is suitable for pre-positioned installation.
- The GK is screwed flush into the gypsum plasterboard using the setting tool provided. Overtightening the fixing should be avoided. Therefore, the installation torque should be limited when using a battery operated screwdriver.
- Adapted for wood, self-tapping and chipboard screws of 4.0 to 5.0mm diameter.
- For board thicknesses greater than 15mm, drill a hole first by using the setting tool.
- Not suitable for gypsum fibreboard and tiled plasterboard.



## TECHNICAL DATA



Plasterboard fixing GK

Article name	Art.-No.	Min. thickness to first supporting layer $t$ [mm]	Max. fixture thickness $t_{fix}$ [mm]	Screw $d_s \times l_s$ [mm]
GK	052389	25		4,5 - 5,0 x Ls
GKS	052390	25	13	4,5 x 35

## LOADS

### Plasterboard fixing GK

Highest recommended loads<sup>1)</sup> for a single anchor.

The given loads are valid for chipboard screws with the specified diameters.

Type			GK
Chipboard screw	Ø	[mm]	4,0 - 5,0
<b>Recommended loads in the respective base material F<sub>rec</sub><sup>2)</sup></b>			
Gypsum plasterboard	9,5 mm	[kN]	0,07
Gypsum plasterboard	12,5 mm	[kN]	0,08
Gypsum plasterboard	2 x 12,5 mm	[kN]	0,11

<sup>1)</sup> Required safety factors are considered.

<sup>2)</sup> Valid for tensile load, shear load and oblique load under any angle.