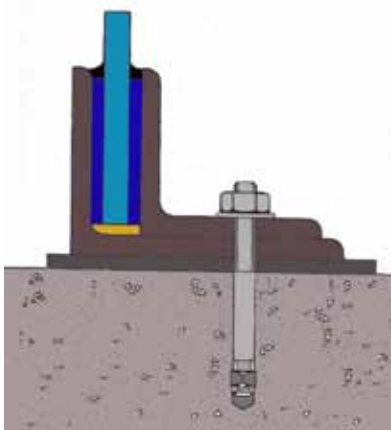


ARBOKOL 682 GUN GRADE FOR BALUSTRADE INSTALLATION

DESCRIPTION

Arbokol 682 Gun Grade is a Two-Part Epoxy Polysulphide Sealant, which when the components are mixed together, cures to form an extremely tough sealant with a small degree of movement accommodation. Arbokol 682 Gun Grade is a thixotropic formulation and is suitable for all types of installations of glass balustrade where a sealant is required.

The product has good adhesion to glass, concrete, stone, metals and many other common building substrates.



Arbokol 682



Setting Block



Arbosil 1096

MAIN APPLICATIONS

Installation of Glass Balustrades as recommended in BS 6180:1999

Arbokol 682 gun grade can be used as a secondary seal for ig units contact technical department arbo @arbo .co.uk.

APPLICATION INSTRUCTIONS

Joint preparation

The joint surfaces must be clean, dry and free from all contamination. The surfaces should be degreased using the appropriate Arbo Cleaner.

All joint preparation, priming, and sealant application should be carried out in accordance with BS 8000 Part 16, the British Standard for the sealing of joints in buildings using sealants. Also see BS6180:1999 for balustrades

Mixing

The ratio of base: curing agent controls the performance properties of Arbokol 682 Gun Grade and tins are filled off to an exact mixing ratio. It is vital therefore that the whole contents of the Curing Agent tin

are added to the Base tin. The two components must be thoroughly mixed to ensure complete homogeneity.

Application

The usual application method once mixed the sealant is transferred to cartridges or bulk loading gun by means of a follower plate.

GLASS BALUSTRADE INSTALLATION PROCEDURE

1. Insert setting blocks at the bottom of the channel.
2. Apply Arbokol 682 Gun Grade to partially fill the void the channel.
3. Insert the glass and locate it on the setting blocks.
4. Insert hardwood packers either side of the glass. The packers are usually in the form of back to back wedges to centralise the glass. It is important to ensure that a gap is left between the adjacent glass panels to avoid shock transfer.
5. Top up any voids with further application of Arbokol 682
6. For external balustrades Arbokol 682 Gun Grade should be recessed at least 5mm below the sight line and be capped with Arbosil 1096 to form a chamfered weather seal.

QUANTITY

Guide lines for glass balustrade installation.

For average sized balustrades it is estimated that one litre will fill one metre run of section.

For accurate quantities we recommend you carry out a site trial.

PACKAGING

1.2 Litre Set, with separate tins for Base and Curing Agent.

COLOURS

Grey

STORAGE LIFE

6 months in original unopened packaging stored in a cool, dry place out of direct sunlight.

HEALTH AND SAFETY

Base component is Polysulphide based and Curing Agent contains Epoxy resin. Both components require careful handling. Please consult MSDS's for each component before use.

ARBOKOL 682 GUN GRADE FOR BALUSTRADE INSTALLATION

TECHNICAL DATA

Work Life (Typical at 20° C):	1½ - 2 hours
Application Temperature:	+ 5° C to + 40° C
Service Temperature:	- 15° C to + 70° C
Typical Shore A Hardness (cured at 20° C):	95
Typical Shore D Hardness (cured at 20° C):	50
Cure Rate at 20° C/65 % RH:	48 hours. At lower temperatures cure rate will be slowed down.
Chemical Resistance:	Resistant to most dilute acids and alkalis, petrol, diesel, jet fuel, vegetable oils and many common solvents.
UV Resistance:	Very Good
Service Life:	20 years
Movement Accommodation:	Butt joints (movement in tension and compression): 5 %.
Force @ Break (7 days cure, tests on a 12 x 12 x 50mm joint):	4500N

ACCESSORIES

Cleaners

Arbo Cleaner No.17- 1 Litre Tin (Xylene based – not suitable for use with plastics or delicate finishes)

Arbo Cleaner No. 16 - 1 Litre Tin (Alcohol Based)

Ancillary Equipment

Cartridge Dispensers

Plungers

Polyethylene Nozzles

Caulking Guns

QUANTITY ESTIMATOR

Joint Size (mm)	metres/litre
6 x 6	27.8
9 x 6	18.5
12 x 9	9.3
18 x 10	5.6
25 x 10	4.0

Important: The information in this leaflet is given in good faith and based on results gained from experience and tests. However, all recommendations or suggestions are made without guarantee since the conditions of use are beyond our control. Goods are supplied subject to the Company's terms and conditions of sales, a copy of which is available on request.

Arbo sealants are manufactured in the U.K. by Adshead Ratcliffe.