

Section 9 Joist Hangers, Wall Ties, Lath & Bead

2280 - Stainless Steel Wall Ties



SS Butterfly Wall Ties

VJT Code	Description	Size (mm)	Pack Qty
22800010	V01	150	250
22800020	V01	200	250
22800030	V01	225	250
22800040	V01	250	250



SS (Single Drip) Double Tri Wall Ties

VJT Code	Description	Size (mm)	Pack Qty
22800045	V02	175	250

SS (Double Drip) Double Tri Wall Ties

VJT Code	Description	Size (mm)	Pack Qty
22800050	V26	200	250
22800060	V26	225	250
22800070	V26	250	250
22800080	V26	300	250



SS Wire Housing Ties

VJT Code	Description	Size (mm)	Pack Qty
22800090	VE4	200	250
22800100	VE4	225	250



SS Wire GP Ties

VJT Code	Description	Size (mm)	Pack Qty
22800110	EN2	200	250
22800120	EN2	225	250



SS Safety Ties

VJT Code	Description	Size (mm)	Pack Qty
22800130	VST1	200	250
22800140	VST1	225	250
22800150	VST1	250	250
22800153	VST1	275	250
22800155	VST1	300	250



SS Vertical Safety Twist Ties

VJT Code	Description	Size (mm)	Pack Qty
22800160	VE1	150	250
22800170	VE1	200	250
22800180	VE1	225	250
22800190	VE1	250	250
22800200	VE1	275	250
22800210	VE1	300	250



SS Safety Cramp

VJT Code	Description	Size (mm)	Pack Qty
22800230	VE7	75	200
22800240	VE7	100	250



SS Safety Cramp C/W Drip

VJT Code	Description	Size (mm)	Pack Qty
22800250	VE7D	125	250
22800260	VE7D	150	250
22800270	VE7D	175	250
22800280	VE7D	200	250
22800290	VE7D	225	250
22800300	VE7D	250	250
22800310	VE7D	300	200



SS Plain Cramp

VJT Code	Description	Size (mm)	Pack Qty
22800320	V7PE	75	250
22800330	V7PE	100	250
22800340	V7PE	125	250
22800350	V7PE	150	250
22800360	V7PE	175	250
22800370	V7PE	200	250
22800380	V7PE	225	250
22800390	V7PE	250	250

1

2

3

4

5

6

7

8

9

10

11

12

13

14

15

16

17

Section 9 Joist Hangers, Wall Ties, Lath & Bead

1
2
3
4
5
6
7
8
9
10
11
12
13
14
15
16
17



SS Timber Cramp C/W Nail

VJT Code	Description	Size (mm)	Pack Qty
22800394	Type V61 (75mm Cavity)	150	250
22800395	Type V61 (50mm Cavity)	125	250
22800396	Type V61 (100mm Cavity)	175	250



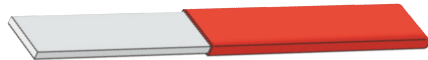
SS Safety / Plain / Safety Ties

VJT Code	Description	Size (mm)	Pack Qty
22800397	VS4	225	250
22800398	VS4	250	250
22800490	VS4	150	250



SS Safety / Plain Ties

VJT Code	Description	Size (mm)	Pack Qty
22800400	SPE	150	250
22800410	SPE	200	250
22800420	SPE	225	250
22800430	SPE	250	250
22800435	SPE	300	250



SS Blank Ties

VJT Code	Description	Size (mm)	Pack Qty
22800440	B20	150	250
22800450	B20	200	250
22800460	B20	225	250
22800470	B20	250	250
22800480	B20	300	200



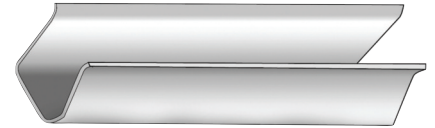
SS Safety / Drip / Safety Ties

VJT Code	Description	Size (mm)	Pack Qty
22800500	VS6D	200	250
22800510	VS6D	225	250
22800520	VS6D	250	250
22800530	VS6D	275	200
22800540	VS6D	300	200



SS Clasp Ties

VJT Code	Description	Size (mm)	Pack Qty
22800544	V63	250	250



SS Dovetail Slot

VJT Code	Description	Size (mm)	Pack Qty
22800560	V29	100	250
22800570	V29	150	250
22800580	V29	3000	1



SS Channel

VJT Code	Description	Size (mm)	Pack Qty
22800620	V60S Slotted Plain Back	28 x15 x 3000	1



SS Dovetail / Safety Ties

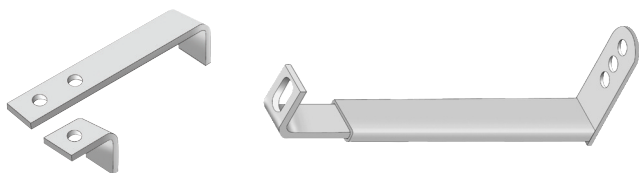
VJT Code	Description	Size (mm)	Pack Qty
22800630	VS8	75	250
22800640	VS8	100	250
22800650	VS8	125	250
22800660	VS8	150	250
22800670	VS8	175	250
22800680	VS8	200	250
22800690	VS8	225	250
22800700	VS8	250	250



SS Dovetail / Safety / Drip Ties

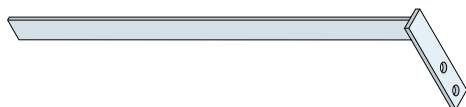
VJT Code	Description	Size (mm)	Pack Qty
22800710	VS8D	125	250
22800720	VS8D	150	250
22800730	VS8D	175	250
22800740	VS8D	200	250
22800750	VS8D	225	250
22800760	VS8D	250	250

Section 9 Joist Hangers, Wall Ties, Lath & Bead



SS Head Restraint Ties

VJT Code	Description	Size (mm)	Pack Qty
22800850	VIR Bolt Fix (IHR)	-	1
22800860	VIR-C Channel Fix	-	1
22800870	VHR Internal (FHR)	-	1



SS WBS Sliding Stem Ties

VJT Code	Description	Size (mm)	Pack Qty
22800880	SAH-UO	350	1
22800890	SAH-UO	550	1



SS Two Way Sliding Ties

VJT Code	Description	Size (mm)	Pack Qty
22800900	STW	200	1
22800910	STW	230	1

SS One Way Sliding Ties

VJT Code	Description	Size (mm)	Pack Qty
22800920	SOW	115	1
22800930	SOW	135	1



PVC Debond Sleeve

VJT Code	Description	Size (mm)	Pack Qty
22800940	V36 Black	20 x 120	250
22800945	V33 Red	40 x 100	1000



Insulation Clip

VJT Code	Description	Size (mm)	Pack Qty
22800950	V23 Red	-	500
22800960	V25 Black	-	1000
22800970	V25 Black (Small Pack)	-	250



Expamet Wall Starter Kit SS

VJT Code	Description	Pack Qty
22800980	Expamet Wall Starter Kit SS	1

Expamet Wall Starter Kit Galv

VJT Code	Description	Pack Qty
22900500	Expamet Wall Starter Kit Galv	1

Neoprene Isolation Pad Ties

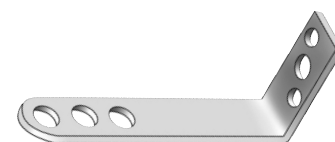
VJT Code	Description	Size (mm)	Pack Qty
22800990	Self Adhesive	50 x 25	250



Ladder Reinforcement

VJT Code	Description	Size (mm)	Pack Qty
22801000	VW	60 x 3050	1
22801010	VW	100 x 3050	1
22801020	VW	150 x 3050	1
22801030	VW	175 x 3050	1

2290 - Galvanised Wall Ties

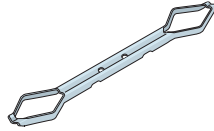


Galvanised Safety Cramp Ties

VJT Code	Size (mm)	Pack Qty
22900010	75	250
22900020	100	250
22900030	125	250
22900040	150	250
22900050	175	250
22900060	200	250
22900070	225	250

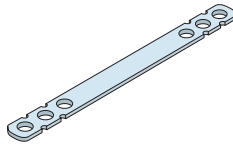
Section 9 Joist Hangers, Wall Ties, Lath & Bead

Ancon Safety Wall Ties



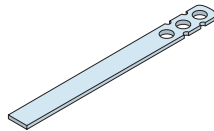
Ancon Safety Wall Ties ST1

Description	Size (mm)	Pack Qty
ST1	200, 225, 250, 275, 300	250



Ancon Safety Wall Ties SPS

Description	Size (mm)	Pack Qty
SPS	150, 200, 225, 250, 275, 300	250

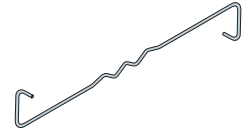


Ancon Safety Wall Ties PPS

Description	Size (mm)	Pack Qty
PPS*	150, 200, 225, 250, 300, 400	250

*Debonding sleeves available to suit.

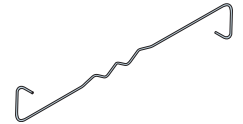
Ancon Wire Ties



Ancon Wire Ties RT2

Description	Size (mm)	Pack Qty
RT2*	200, 225, 250	250

*Replaces Double Triangle Tie.



Ancon Wire Ties HRT4

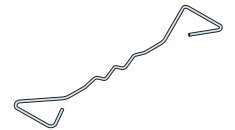
Description	Size (mm)	Pack Qty
HRT4*	200, 225	250

*Replaces Butterfly Tie.



Ancon Wire Ties Butterfly

Description	Size (mm)	Pack Qty
Butterfly	200, 225, 250	250



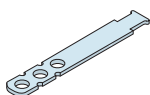
Ancon Wire Ties Double Triangle

Description	Size (mm)	Pack Qty
Double Triangle	150, 200, 225, 250, 300	250

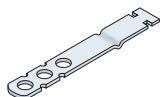
The full range of Ancon Wall Ties are available, please contact sales on 01233 652550 for further details.

Section 9 Joist Hangers, Wall Ties, Lath & Bead

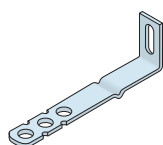
Ancon Channel Ties



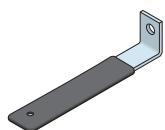
Ancon Channel Ties SP21 / SP28 / SP36		
Description	Size (mm)	Pack Qty
SP21 / SP28 / SP36	75, 100, 125, 150, 175, 200	250



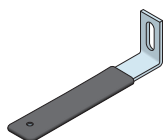
Ancon Channel Ties SD21 / SD25 / SD28 / SD36		
Description	Size (mm)	Pack Qty
SD21 / SD25 / SD28 / SD36	75, 100, 125, 150, 175, 200	250



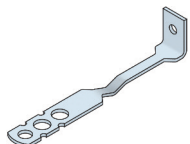
Ancon Frame Cramps SDV		
Description	Size (mm)	Pack Qty
SDV	100, 125, 150, 175, 200, 225, (250, 275, 300*)	250



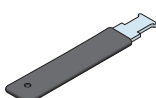
Ancon Frame Cramps PPB		
Description	Size (mm)	Pack Qty
PPB	100, 125, 150, 175, 200, 225, (250, 275, 300*)	250



Ancon Frame Cramps PPV		
Description	Size (mm)	Pack Qty
PPV	100, 125, 150, 175, 200, 225, (250, 275, 300*)	250

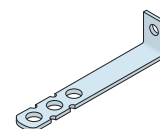


Ancon Frame Cramps SRB		
Description	Size (mm)	Pack Qty
SRB	125, 150, 176, 200	250

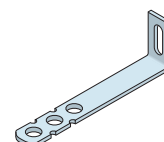


Ancon Channel Ties PP21 / PP28 / PP36		
Description	Size (mm)	Pack Qty
PP21 / PP28 / PP36	75, 100, 125, 150, 175, 200	250

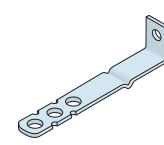
Ancon Frame Cramps



Ancon Frame Cramps SPB		
Description	Size (mm)	Pack Qty
SPB	75, 100, 125, 150, 200, 225, (250, 275, 300*)	250



Ancon Frame Cramps SPV		
Description	Size (mm)	Pack Qty
SPV	75, 100, 125, 150, 175, 200, 225, (250, 275, 300*)	250



Ancon Frame Cramps SDB		
Description	Size (mm)	Pack Qty
SDB	100, 125, 150, 175, 200, 225, (250, 275, 300*)	250

*Not usually stocked.

The full range of Ancon Frame Cramps and Channel Ties are available, please contact sales on 01233 652550 for further details.

1

2

3

4

5

6

7

8

9

10

11

12

13

14

15

16

17