



THA is a one-piece joist hanger supporting trussed rafters and composite timbers from timber members. Provides great support with ease of installation. Install using one nail size (3.75x30mm square twist) or use our patented option featuring additional 3.75x75mm nails for increased performance. For further performance use 3.75x75mm nails throughout. A separate set of performance values are published for each installation. Available in seat widths from 38mm to 100mm.



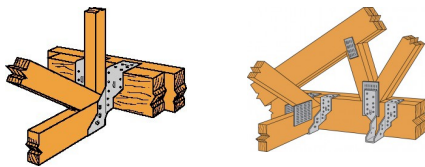
[UK-DoP-e06/0270](#), [ETA-06/0270](#)

FEATURES



Material

- Pre-galvanised mild steel.



APPLICATIONS

Suitable On

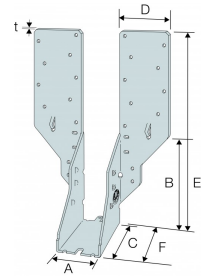
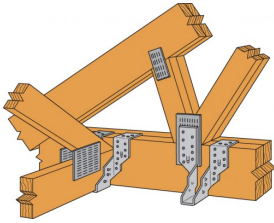
- Solid sawn timber.
- Engineered timber.

When to Use

- Trusses.
- Joists.

TECHNICAL DATA

Dimensions



References	Joist dimensions - face fix [mm]		Joist dimensions - wrap over (N3.75x30 joist nails or N3.75x75 Double Shear Joist Nails) [mm]		Joist dimensions - wrap over (N3.75x75 Nails throughout) [mm]		Dimensions [mm]							Header holes	Joist holes
	Header		Header		Header		A	B	C	D	E	F	t	Ø4.1	Dome nail holes
	Min	Max.	Min	Max.	Min	Max.									
THA38	38	197	38	122	38	147	38	226	62.5	59.5	-	64.5	1.2	22	6
THA44	44	197	44	122	44	147	44	223	62.5	59.5	-	64.5	1.2	22	6
THA50	50	197	50	122	50	147	50	220	62.5	59.5	-	64.5	1.2	22	6
THA75	75	197	75	122	75	147	75	232.5	62.5	59.5	-	64.5	1.2	22	6
THA100	100	197	100	122	100	147	100	220	62.5	59.5	-	64.5	1.2	22	6

Product capacities - Timber to timber - Face fix installation

References	Fasteners				Characteristic capacities [kN]		Safe working loads - C27/TR26 [kN]		
	Header		Joist		R _{1,k}	R _{2,k}	R _{1,SWL,Long Term}	R _{1,SWL,Medium Term}	R _{2,SWL,Short Term}
	Qty	Type	Qty	Type	C27/TR26 N3.75x30	N3.75x30	N3.75x30	N3.75x30	N3.75x30
THA38	20	*	6	N3.75x30	12.4	3.7	5.2	5.9	1.9
THA44	20	*	6	N3.75x30	12.4	3.7	5.2	5.9	1.9
THA50	20	*	6	N3.75x30	12.4	3.7	5.2	5.9	1.9
THA75	20	*	6	N3.75x30	12.4	3.7	5.2	5.9	1.9
THA100	20	*	6	N3.75x30	12.4	3.7	5.2	5.9	1.9

* Refer to capacity table columns for type of fasteners that can be used on header. Capacities depending on fastener type.

Product capacities - Timber to timber - Face fix installation (Double Shear Joist Nails)

References	Fasteners				Characteristic capacities - Timber C27/TR26 [kN]		Safe working loads - C27/TR26 [kN]		
	Header		Joist		R _{1,k}	R _{2,k}	R _{1,SWL,Long Term}	R _{1,SWL,Medium Term}	R _{2,SWL,Short Term}
	Qty	Type	Qty	Type	N3.75x30	N3.75x30	N3.75x30	N3.75x30	N3.75x30
THA38	20	N3.75*	6	N3.75x75	15.4	5.3	6.4	7.3	2.7
THA44	20	N3.75*	6	N3.75x75	15.4	5.3	6.4	7.3	2.7

References	Fasteners				Characteristic capacities - Timber C27/TR26 [kN]		Safe working loads - C27/TR26 [kN]		
	Header		Joist		R _{1,k}	R _{2,k}	R _{1,SWL,Long Term}	R _{1,SWL,Medium Term}	R _{2,SWL,Short Term}
	Qty	Type	Qty	Type	N3.75x30	N3.75x30	N3.75x30	N3.75x30	N3.75x30
THA50	20	N3.75*	6	N3.75x75	15.4	5.3	6.4	7.3	2.7
THA75	20	N3.75*	6	N3.75x75	15.4	5.3	6.4	7.3	2.7
THA100	20	N3.75*	6	N3.75x75	15.4	5.3	6.4	7.3	2.7

* Refer to capacity table columns for type of fasteners that can be used on header. Capacities depending on fastener type.

Product capacities - Timber to timber - Face fix installation (N3.75x75 Nails throughout)

References	Fasteners		Characteristic capacities - C27/TR26 [kN]		Safe working Loads - C27/TR26 [kN]		
	Header	Joist	R _{1,k}	R _{2,k}	R _{1,SWL,Long Term}	R _{1,SWL,Medium Term}	R _{2,SWL, Short Term}
	Qty	Qty	N3.75x75	N3.75x75	N3.75x75	N3.75x75	N3.75x75
THA50	26	6	20.46	5.3	8.6	9.8	2.7
THA100	26	6	20.46	5.3	8.6	9.8	2.7

Product capacities - Timber to timber - Wrap over installation

References	Fasteners			Characteristic capacities [kN]		Safe Working Loads - C27/TR26 [kN]		
	Header		Joist	R _{1,k}	R _{2,k}	R _{1,SWL,Long Term}	R _{1,SWL,Medium Term}	R _{2,SWL,Short Term}
	Top	Face	Qty	C27/TR26	N3.75x30	N3.75x30	N3.75x30	N3.75x30
	Qty	Qty		N3.75x30				
THA38	4	8	6	10.5	3.7	4.4	5	1.9
THA44	4	8	6	10.5	3.7	4.4	5	1.9
THA50	4	8	6	10.5	3.7	4.4	5	1.9
THA75	4	8	6	10.5	3.7	4.4	5	1.9
THA100	4	8	6	10.5	3.7	4.4	5	1.9

Product capacities - Timber to timber - Wrap over installation (Double Shear Joist Nails)

References	Fasteners				Characteristic capacities - C27/TR26 [kN]		Safe Working Loads - C27/TR26 [kN]				
	Header				Joist		R _{1,k}	R _{2,k}	R _{1,SWL,Long Term}	R _{1,SWL,Medium Term}	R _{2,SWL,Short Term}
	Top		Face		Qty	Type	N3.75x30	N3.75x30	N3.75x30	N3.75x30	N3.75x30
	Qty	Type	Qty	Type							
THA38	4	N3.75*	8	N3.75*	6	N3.75x75	16.4	5.3	6.8	7.8	2.7
THA44	4	N3.75*	8	N3.75*	6	N3.75x75	16.4	5.3	6.8	7.8	2.7
THA50	4	N3.75*	8	N3.75*	6	N3.75x75	16.4	5.3	6.8	7.8	2.7
THA75	4	N3.75*	8	N3.75*	6	N3.75x75	16.4	5.3	6.8	7.8	2.7
THA100	4	N3.75*	8	N3.75*	6	N3.75x75	16.4	5.3	6.8	7.8	2.7

* Refer to capacity table columns for type of fasteners that can be used on header. Capacities depending on fastener type.

Product capacities - Timber to timber - Wrap over installation (N3.75x75 Nails throughout)

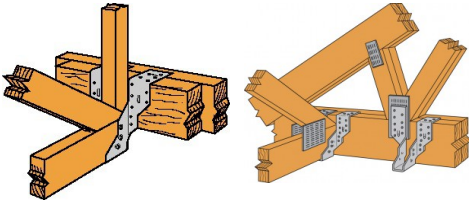
References	Fasteners			Characteristic capacities - C27/TR26 [kN]		Safe Working Load - C27/TR26 [kN]		
	Header		Joist	R _{1,k}	R _{2,k}	R _{1,SWL,Long Term}	R _{1,SWL,Medium Term}	R _{2,SWL,Short Term}
	Top	Face	Qty	N3.75x75	N3.75x75	N3.75x75	N3.75x75	N3.75x75
	Qty	Qty						
THA50	4	14	6	20.46	5.3	8.6	9.8	2.7
THA100	4	14	6	20.46	5.3	8.6	9.8	2.7

INSTALLATION

Installation

2 configurations possibles :

- Ailes à plat, montage traditionnel à l'identique des sabots à ailes extérieures.
- Ailes pliées pour ajuster la hauteur du sabot par rapport à l'élément porteur. Clouer les ailes rabattues.



THA
configurations.