

# Concrete screw for temporary fixing TSM BC ST

## Concrete screw for temporary fixing TSM BC ST

### Material

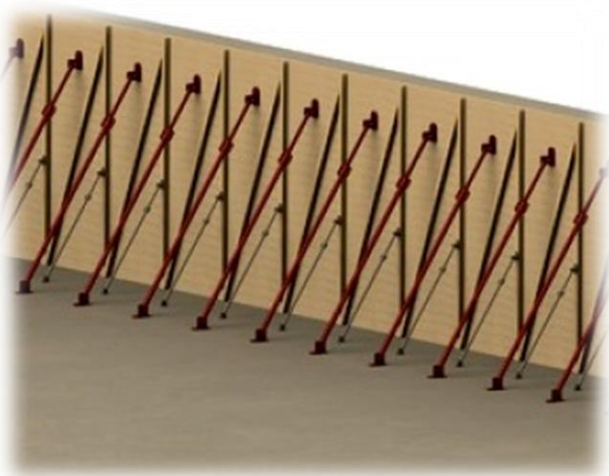
- galvanised steel

### Base material

- approved for fresh concrete with a compressive strength of  $\geq 10 \text{ N/mm}^2$
- cracked and non-cracked concrete

### Product features

- anchoring site equipment in fresh concrete
- high load capacity in cracked and non-cracked concrete
- temporary fastening, also outdoors
- reusable (operational check with sleeve gauge)
- quick installation
- residual-free removal

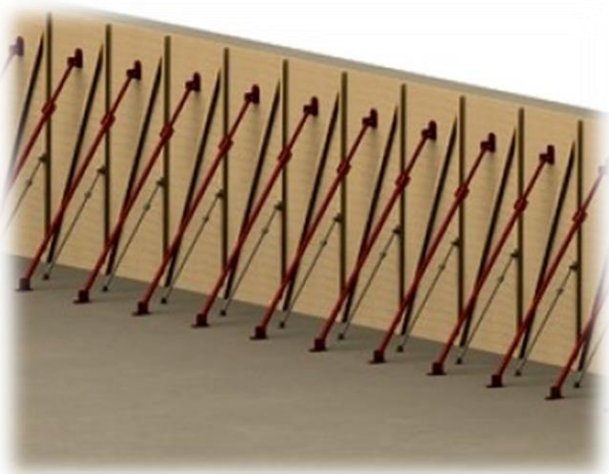


# Concrete screw for temporary fixing TSM BC ST

## Technical characteristics

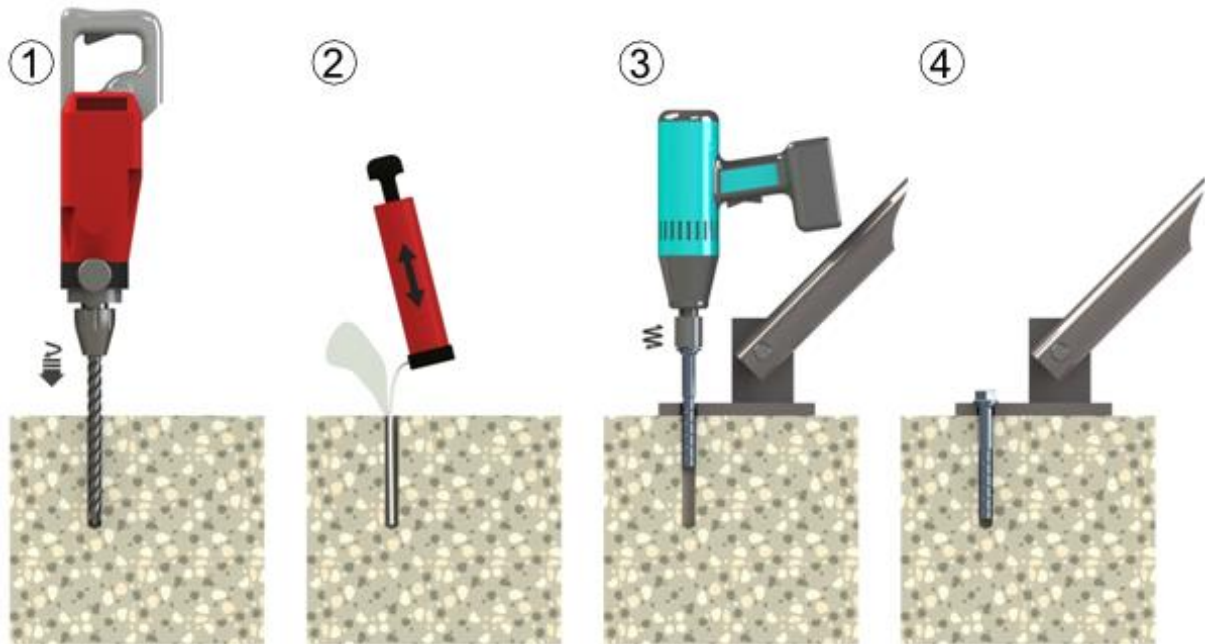
			TSM BC ST 10	TSM BC ST 12	TSM BC ST 14	
drill bit diameter	$d_0$	[mm]	10	12	14	
depth of drill hole	$h_1$	[mm]	85	100	125	
embedment depth of anchor	$h_{nom}$	[mm]	75	90	115	
minimum thickness of member	$h_{min}$	[mm]	150	195	200	225
minimum edge distance in load direction	$c_1$	[mm]	100	130	135	150
minimum edge distance transverse to load direction	$c_2$	[mm]	150	195	200	225
minimum spacing	$s$	[mm]	300	390	400	450
permissible load for concrete strength $f_{ck,cube} \geq 10 \text{ N/mm}^2$ <sup>1)</sup>	$N_{zul,10}$	[kN]	4,0	8,0	10,0	12,0
permissible load for concrete strength $f_{ck,cube} \geq 15 \text{ N/mm}^2$ <sup>1)</sup>	$N_{zul,15}$	[kN]	4,7	8,7	12,0	14,7
permissible load for concrete strength $f_{ck,cube} \geq 20 \text{ N/mm}^2$ <sup>1)</sup>	$N_{zul,20}$	[kN]	5,3	9,3	13,3	16,7

1) The partial safety for load actions  $\gamma_F = 1,4$  were considered for determining the load.



# Concrete screw for temporary fixing TSM BC ST

## Installation instructions



- 1) set drill hole
- 2) clean out drill hole from the base
- 3) screw in the concrete screw
- 4) screw head must fully contact the fixture

## ATTENTION during multiply use

