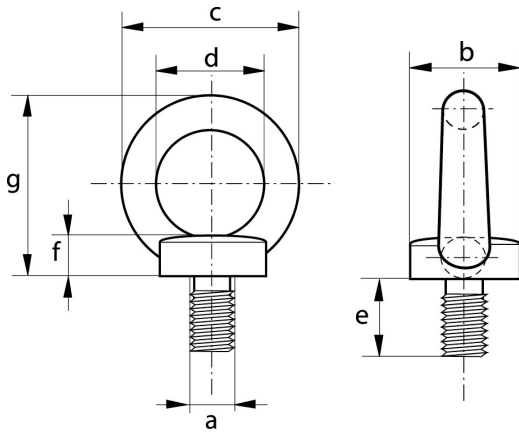


Stainless Steel Eyebolt

drop forged



| | |
|----------------------|--|
| Material | AISI 316 |
| Safety Factor | MBL equals 4 x WLL |
| Standard | Generally to DIN580 |
| Finish | Polished |
| Certificate | As standard; EC Declaration of Conformity Upon request; 2.1, 2.2, 3.1 |

| WLL | Diameter Thread | Diameter Base | Diameter Eye | Diameter Eye | Length | Thickness Base | Height | Product Code | Weight Each |
|------|--------------------|------------------|-----------------|-----------------|--------|-------------------|--------|-----------------|----------------|
| t | a | b | c | d | e | f | g | | kg |
| | mm | mm | mm | mm | mm | mm | mm | | |
| 0.07 | 6 | 20 | 36 | 20 | 13 | 6 | 36 | 92101 | 0.06 |
| 0.14 | 8 | 20 | 36 | 20 | 13 | 6 | 36 | 92102 | 0.06 |
| 0.23 | 10 | 25 | 45 | 25 | 17 | 8 | 45 | 92103 | 0.10 |
| 0.34 | 12 | 30 | 54 | 30 | 20.5 | 10 | 53 | 92104 | 0.17 |
| 0.49 | 14 | 35 | 63 | 35 | 27 | 12 | 60 | 92105 | 0.27 |
| 0.70 | 16 | 35 | 63 | 35 | 27 | 12 | 62 | 92106 | 0.28 |
| 0.90 | 18 | 40 | 72 | 40 | 30 | 14 | 71 | 92107 | 0.40 |
| 1.20 | 20 | 40 | 72 | 40 | 30 | 14 | 71 | 92108 | 0.42 |
| 1.50 | 22 | 45 | 81 | 45 | 35 | 14 | 80 | 92109 | 0.67 |
| 1.80 | 24 | 50 | 90 | 50 | 36 | 18 | 90 | 92110 | 0.83 |
| 3.20 | 30 | 65 | 108 | 60 | 45 | 22 | 109 | 92111 | 1.66 |
| 4.60 | 36 | 75 | 126 | 70 | 54 | 26 | 128 | 92112 | 2.65 |