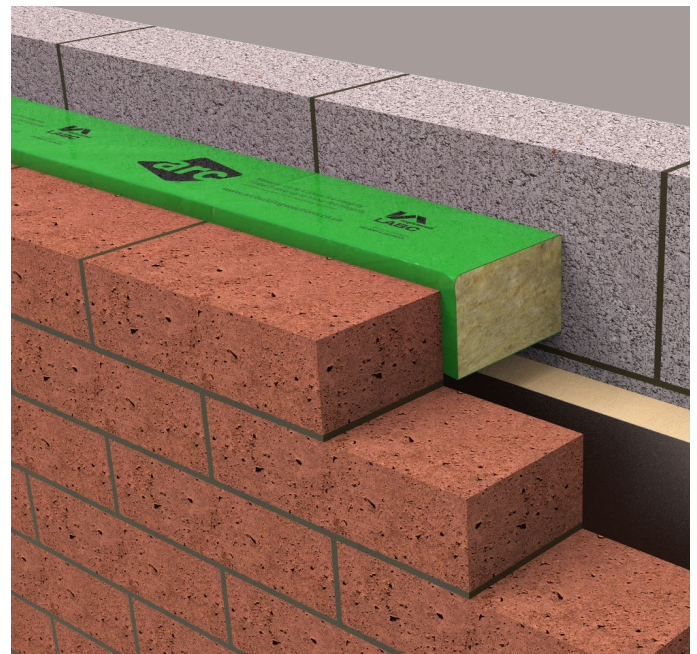




CAVITY STOP SOCK

Cavity fire barrier for masonry construction

- » Up to 4 hours fire integrity
- » Horizontal and vertical options
- » Specified in terraced, semi-detached, apartments and major projects
- » Meets requirements of Robust Detail Part E and Approved Document B
- » Maximum cavity width available: 300mm
- » Easily installed with compression fit; no mechanical fix is required
- » Third-party certificated by Certifire



CAVITY STOP SOCK



Application

ARC Cavity Stop Sock restricts the spread of smoke and flames within the cavity of external masonry walls. It is ideally suited for providing a cavity barrier within the external wall cavity, in line with a separating wall or floor as specified in Approved Document B, and for closing the cavity at eaves level.

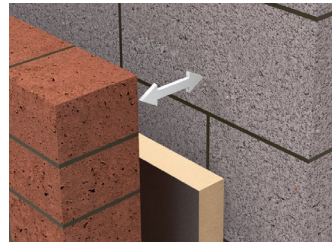
Installation

ARC Cavity Stop Sock is designed to be simply compression fitted as the brick and block work progresses. No mechanical fixing is required, with the compression fit holding the barrier in place.

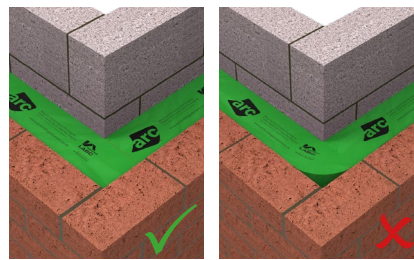
The barrier must fully fill the cavity from external brick to internal block. Any cavity insulation must be cut back at the location of the barrier, and care must be taken to ensure that the built cavity width is accurate and that the size of barrier fitted is appropriate to this.

- » Vertical application: we recommend building up the internal block work first. Then progress several courses of brickwork, before installing the barrier. The brickwork can continue, building the barrier in. Care must be taken to ensure the correct compression fit is achieved.
- » Horizontal application: build the brickwork up to the level the barrier will be installed, ensuring the width of the cavity is correct. Allow the brickwork to set, before push fitting the barrier in to place and under the correct compression.
- » At the end of a run, or at a corner, lengths of barrier should be cut to the required length, and then tightly butt jointed ensuring no gaps remain.
- » The polythene encapsulation does not contribute to the performance of the barrier, but offers weather protection and product identification. We recommend that it is left in place for these purposes, however if it becomes torn or damaged there is no cause for concern.
- » You should not attempt to squash the barrier before installation. Although this can make the barrier easier to fit, it is likely to cause gaps and may damage the barrier, resulting in reduced performance.

What does good look like?



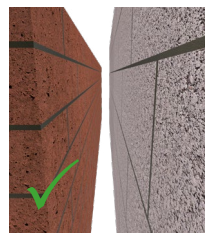
The cavity width is accurate and the cavity insulation has been cut back where the barrier will be located



All corners and joints are tightly butt jointed. Barriers are not bent around corners.



Excess polythene is remove from joints



The cavity is clear from debris



Green horizontal barrier shown; the above points can be applied to all installations regardless of size or orientation.



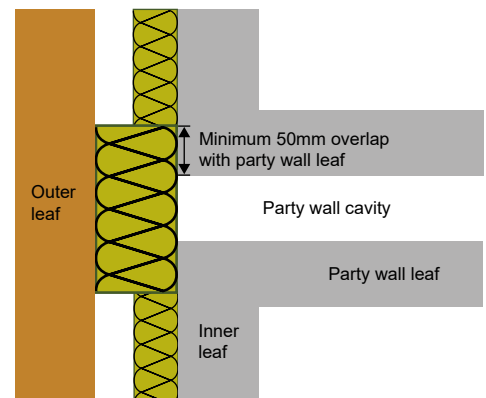
Scan or click the QR code to watch the installation video



Party Wall Junction

ARC's Party Wall Cavity Stop Sock is designed for use at the party wall junction; fitted in the external wall cavity, with a minimum 50mm overlap either side of the party wall cavity. At 250mm wide, ARC's PWCSS range is suitable for use with party wall cavities up to 150mm wide.

These wider barriers do not require a compression fit, and are supplied with a 5mm compression to allow for site anomalies.



CAVITY STOP SOCK



Product & Packaging Specification

Product Code	Suitable for Cavity Width	Sleeve Colour	Masonry Fire Performance		Compression Required	Dimensions	Lengths per pack	Packs per pallet
			Fire Integrity	Insulation				
CSS50	50mm	Red	4 hrs	15 mins	15mm	65 x 65 x 1200mm	40	12
CSS75	75mm	Red	4 hrs	15 mins	15mm	90 x 75 x 1200mm	35	12
CSS80	80mm	Green	4 hrs	15 mins	20mm	100 x 100 x 1200mm	24	10
CSS85	85mm	Green	4 hrs	15 mins	20mm	105 x 100 x 1200mm	24	10
CSS90	90mm	Green	4 hrs	15 mins	20mm	110 x 100 x 1200mm	20	10
CSS95	95mm	Green	4 hrs	15 mins	20mm	115 x 100 x 1200mm	20	10
CSS100	100mm	Green	4 hrs	15 mins	20mm	120 x 100 x 1200mm	20	10
CSS105	105mm	Green	4 hrs	15 mins	10mm	120 x 120 x 1200mm	15	10
CSS110	110mm	Green	4 hrs	15 mins	10mm	120 x 120 x 1200mm	15	10
CSS115	115mm	Lt Blue	4 hrs	15 mins	10mm	130 x 120 x 1200mm	15	10
CSS120	120mm	Lt Blue	4 hrs	15 mins	10mm	135 x 120 x 1200mm	15	10
CSS125	125mm	Lt Blue	4 hrs	15 mins	10mm	135 x 120 x 1200mm	15	10
CSS130	130mm	Lt Blue	4 hrs	15 mins	10mm	140 x 120 x 1200mm	15	10
CSS135	135mm	Lt Blue	4 hrs	15 mins	10mm	145 x 120 x 1200mm	15	10
CSS140	140mm	Lt Blue	4 hrs	15 mins	10mm	150 x 120 x 1200mm	15	10
CSS145	145mm	Lt Blue	4 hrs	15 mins	10mm	155 x 120 x 1200mm	15	8
CSS150	150mm	Lt Blue	4 hrs	15 mins	10mm	160 x 120 x 1200mm	15	8
CSS155	155mm	Lt Blue	2 hrs	15 mins	10mm	165 x 150 x 1200mm	12	8
CSS160	160mm	Lt Blue	2 hrs	15 mins	10mm	170 x 150 x 1200mm	12	8
CSS165	165mm	Lt Blue	2 hrs	15 mins	10mm	175 x 150 x 1200mm	10	8
CSS170	170mm	Lt Blue	2 hrs	15 mins	10mm	180 x 150 x 1200mm	10	8
CSS175	175mm	Lt Blue	2 hrs	15 mins	10mm	185 x 150 x 1200mm	9	8
CSS180	180mm	Lt Blue	2 hrs	15 mins	10mm	190 x 150 x 1200mm	9	8
CSS185	185mm	Red	2 hrs	15 mins	10mm	195 x 150 x 1200mm	9	8
CSS190	190mm	Red	2 hrs	15 mins	10mm	200 x 150 x 1200mm	9	8
CSS195	195mm	Red	2 hrs	15 mins	10mm	205 x 150 x 1200mm	9	8
CSS200	200mm	Red	2 hrs	15 mins	10mm	210 x 150 x 1200mm	8	10
CSS225	225mm	Black	2 hrs	15 mins	10mm	235 x 200 x 1200mm	3	16
CSS250	250mm	Black	2 hrs	15 mins	10mm	260 x 200 x 1200mm	4	12
CSS275	275mm	Black	2 hrs	15 mins	10mm	285 x 200 x 1200mm	4	12
CSS300	300mm	Black	2 hrs	15 mins	10mm	310 x 200 x 1200mm	4	10

ARC Party Wall Cavity Stop Socks: vertical cavity fire barrier at the party wall junction

PWCSS50	50mm	Red	4 hrs	4 hrs	Friction	55 x 250 x 1200mm	12	10
PWCSS75	75mm	Red	4 hrs	4 hrs	Friction	80 x 250 x 1200mm	10	10
PWCSS100	100mm	Red	4 hrs	4 hrs	Friction	105 x 250 x 1200mm	8	10
PWCSS125	125mm	Red	4 hrs	4 hrs	Friction	130 x 250 x 1200mm	6	10
PWCSS150	150mm	Red	4 hrs	4 hrs	Friction	155 x 250 x 1200mm	6	10
PWCSS175	175mm	Red	4 hrs	3 hrs	Friction	180 x 250 x 1200mm	4	10
PWCSS200	200mm	Red	4 hrs	3 hrs	Friction	205 x 250 x 1200mm	4	10
PWCSS225	225mm	Black	4 hrs	3 hrs	Friction	230 x 250 x 1200mm	4	10
PWCSS250	250mm	Black	4 hrs	3 hrs	Friction	255 x 250 x 1200mm	4	10
PWCSS275	275mm	Black	4 hrs	3 hrs	Friction	280 x 250 x 1200mm	2	12
PWCSS300	300mm	Black	4 hrs	3 hrs	Friction	305 x 250 x 1200mm	2	12

Can't find your size? ARC Cavity Stop Sock can be manufactured to suit any cavity width up to 300mm, including any intermediary sizes not listed above. **Call our technical experts on 0113 252 9428 to discuss your requirements.**

CAVITY STOP SOCK



Key Stats

Length supplied	1.2m
Third-party certification	Certifire CF5403
Insulation	Non-combustible rockfibre mineral wool
Thermal conductivity	0.037W/mK
Fire rating	Up to 4 hours

Insulation performance	Minimum 15 mins
Test standard	BS 476 Part 20
Construction type	Masonry
Orientation	Vertical or horizontal
Robust Detail compliance	E-WM 1-21

Fire Properties

ARC Cavity Stop Sock has been fire tested in accordance with the principles given in BS 476: Part 20: 1987, achieving up to four hours fire integrity within a masonry construction.

ARC Cavity Stop Sock is certificated by Certifire, a third-party accreditation scheme from Exova Warrington Certification. Certifire assures architects, specifiers, contractors and building owners that a correctly installed product will perform as expected.

Certifire Certificate of Approval no. CF5403.

Non-Standard Applications

Where usage falls outside of the certificated scope, for example when used with external cladding, or with an internal metal frame system, performance of the fire barrier will depend heavily upon the structural integrity and fire performance of the surrounding construction.

Specifiers must ensure all construction elements that make up part of the internal or external leaf of the wall, including support systems, are suitable for use with a cavity fire barrier for the length of fire integrity and insulation required. Particular attention must be paid to any possible deflection or distortion which could cause gaps to form between the construction and any fire barrier installed.

In the event of a fire, ARC Building Solutions Ltd cannot accept liability for failure where usage is outside of the standard application, including but not limited to, where deflection or distortion has allowed gaps to form around the barrier, or where the barrier is not fitted in accordance with the manufacturer's guidelines.

Any information provided within this document is intended for guidance only. Expert technical advice should be sought before specification or installation of any product. It is of particular importance to ensure that any fire barrier or fire stopping product is tested for use with the exact application intended. ARC Building Solutions Ltd cannot accept liability for failure where usage is outside of the standard application, including but not limited to, where deflection or distortion has allowed gaps to form around the barrier, or where the barrier is not fitted in accordance with the manufacturer's guidelines.

© 2020 ARC Building Solutions Ltd. ARC and T-Barrier are registered trademarks of ARC Building Solutions Ltd.

Standards

ARC Cavity Stop Sock is manufactured using rockfibre mineral wool which achieves a fire classification of Euroclass A1 as defined in BS EN 13501-1, and conforms to BS EN 13162 and EN16001 Energy Management Systems.

ARC's rockfibre mineral wool insulation has a thermal conductivity of 0.037W/mK.

Storage and Packaging

ARC Cavity Stop Sock is supplied in polythene packs which are designed for transporting and protecting the products. It is not recommended that the packs are stored in direct sunlight. When storing the barriers for longer periods of time it is recommended that the product should be stored indoors, or under cover.

Environment

No CFCs or HCFCs are involved in the manufacturing process of ARC's rockfibre mineral wool insulation. The material presents no known threat to the environment and is classed as ODP and GWP zero.

ARC Cavity Stop Sock has a Green Guide rating of A+.

Health and Safety

ARC Building Solutions has an approved Health and Safety Policy and is committed to working and supplying products safely. ARC's rockfibre mineral wool is not classed as a possible human carcinogen. We have assessed products as required by Substances Hazardous to Health Regulations (COSHH). An ARC COSHH data sheet is available and can be downloaded from ARC's website.



Certificate Number 19310
ISO 9001, ISO 14001
ISO 45001