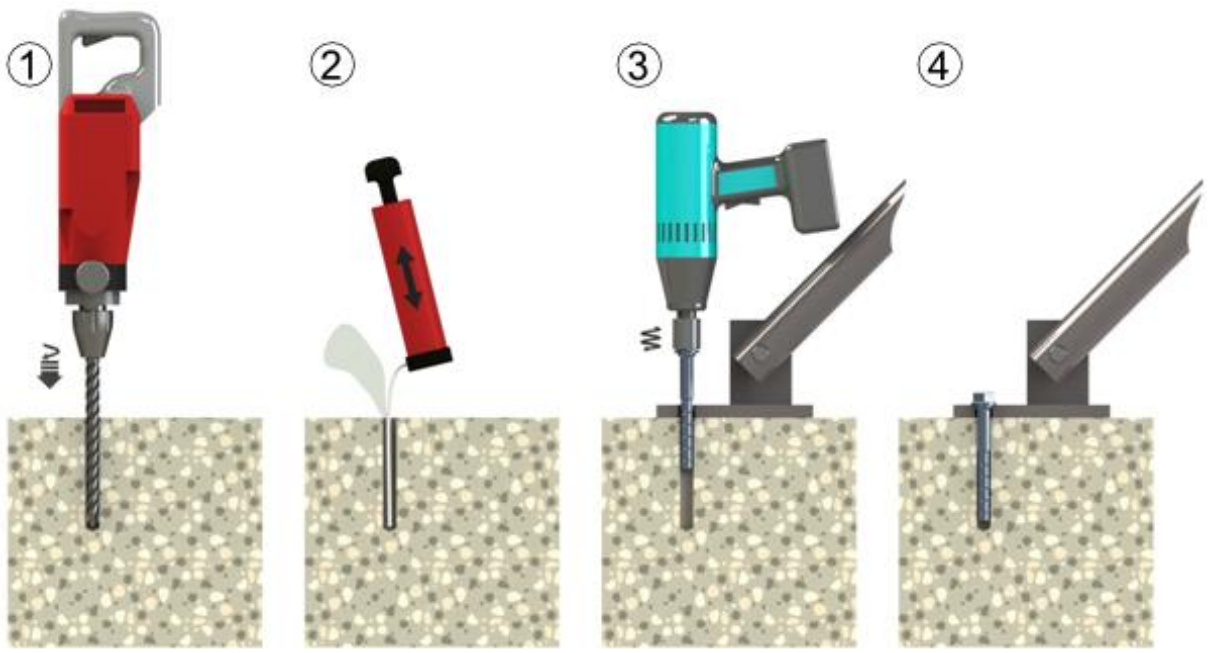
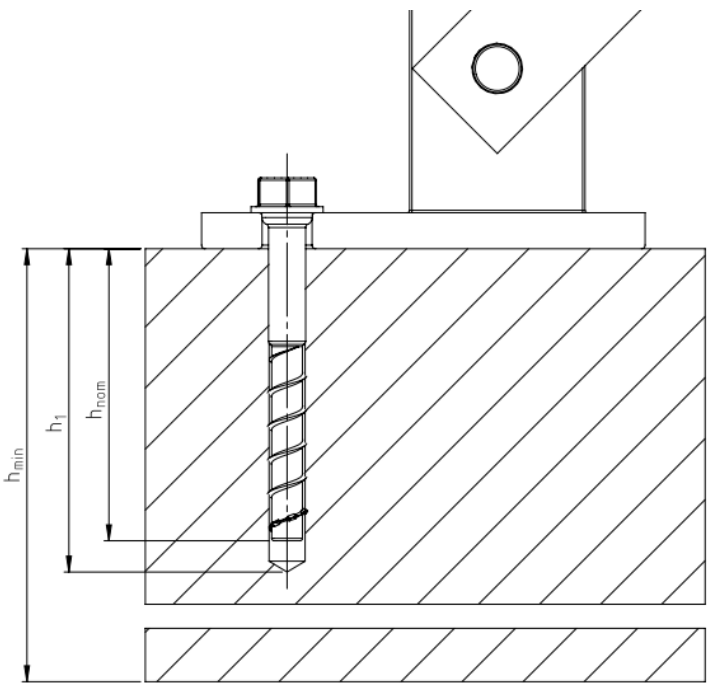


Specifications

Toge concrete screw for temporary fastening of site equipment

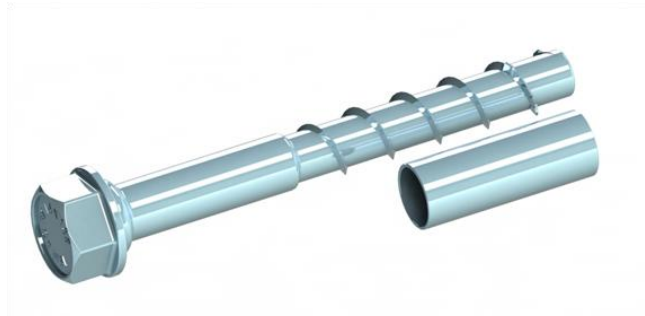



TOGE
 DÜBEL


Technical characteristics

			TSM BC ST 10	TSM BC ST 12	TSM BC ST 14	
drill bit diameter	d_0	[mm]	10	12	14	
depth of drill hole	h_1	[mm]	85	100	125	
embedment depth of the anchor	h_{nom}	[mm]	75	90	115	
minimum thickness of member	h_{min}	[mm]	150	195	200	225
minimum edge distance in load direction	c_1	[mm]	100	130	135	150
minimum edge distance transverse to the load direction	c_2	[mm]	150	195	200	225
minimum spacing	s	[mm]	300	390	400	450
permissible load for concrete strength $f_{ck,cube} \geq 10 \text{ N/mm}^2$ ¹⁾	$N_{per,10}$	[kN]	4,0	8,0	10,0	12,0
permissible load for concrete strength $f_{ck,cube} \geq 15 \text{ N/mm}^2$ ¹⁾	$N_{per,15}$	[kN]	4,7	8,7	12,0	14,7
permissible load for concrete strength $f_{ck,cube} \geq 20 \text{ N/mm}^2$ ¹⁾	$N_{per,20}$	[kN]	5,3	9,3	13,3	16,7

- 1) The partial safety factor for material resistance $\gamma_M = 1.4$ as well partial safety factor for load actions $\gamma_F = 1.4$ are considered.



TOGE
Z-21.8.1916
Institut für Massivbau
Technische Universität
Darmstadt

