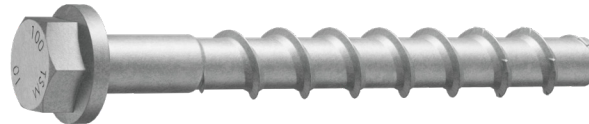


# TOGE TSM High Performance

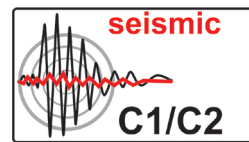
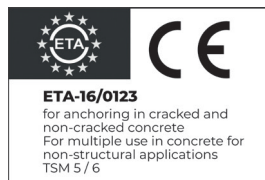
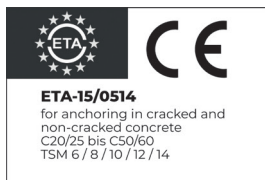
Allrounder concrete screw - for heavy loads

**Steel - zinc flake-coated**

Version with hexagon head and pressed-on washer



Size	Disc-Ø
5	12,5 mm
6	15,0 mm
8	16,0 mm
10	20,0 mm
12	23,5 mm
14	28,3 mm



Item nr.	Designation	Depth of drill hole $h_{01} / h_{02} / h_{03}$	Embedment depth of anchor $h_{nom1} / h_{nom2} / h_{nom3}$	Max. thickness of fixture $t_{fix1} / t_{fix2} / t_{fix3}$	Packing Unit
400 005 040	TSM 5x40 SW10 ZFC	40mm / - / -	35mm / - / -	5mm / - / -	100
400 005 050	TSM 5x50 SW10 ZFC	40mm / - / -	35mm / - / -	15mm / - / -	100
400 005 060	TSM 5x60 SW10 ZFC	40mm / - / -	35mm / - / -	25mm / - / -	100
400 006 040	TSM 6x40 SW13 ZFC	40mm / - / -	35mm / - / -	5mm / - / -	100
400 006 050	TSM 6x50 SW13 ZFC	40mm / 45mm / -	35mm / 40mm / -	15mm / 10mm / -	100
400 006 060	TSM 6x60 SW13 ZFC	40mm / 45mm / 60mm	35mm / 40mm / 55mm	25mm / 20mm / 5mm	100
400 006 080	TSM 6x80 SW13 ZFC	40mm / 45mm / 60mm	35mm / 40mm / 55mm	45mm / 40mm / 25mm	100
400 006 100	TSM 6x100 SW13 ZFC	40mm / 45mm / 60mm	35mm / 40mm / 55mm	65mm / 60mm / 45mm	100
400 008 050	TSM 8x50 SW13 ZFC	55mm / - / -	45mm / - / -	5mm / - / -	50
400 008 060	TSM 8x60 SW13 ZFC	55mm / 65mm / -	45mm / 55mm / -	15mm / 5mm / -	50
400 008 070	TSM 8x70 SW13 ZFC	55mm / 65mm / 75mm	45mm / 55mm / 65mm	25mm / 15mm / 5mm	50
400 008 080	TSM 8x80 SW13 ZFC	55mm / 65mm / 75mm	45mm / 55mm / 65mm	35mm / 25mm / 15mm	50
400 008 090	TSM 8x90 SW13 ZFC	55mm / 65mm / 75mm	45mm / 55mm / 65mm	45mm / 35mm / 25mm	50
400 008 100	TSM 8x100 SW13 ZFC	55mm / 65mm / 75mm	45mm / 55mm / 65mm	55mm / 45mm / 35mm	50
400 008 120	TSM 8x120 SW13 ZFC	55mm / 65mm / 75mm	45mm / 55mm / 65mm	75mm / 65mm / 55mm	50
400 008 140	TSM 8x140 SW13 ZFC	55mm / 65mm / 75mm	45mm / 55mm / 65mm	95mm / 85mm / 75mm	50

# TOGE TSM High Performance

## Steel - zinc flake-coated

Version with hexagon head and pressed-on washer

Item nr.	Designation	Depth of drill hole $h_{01} / h_{02} / h_{03}$	Embedment depth of anchor $h_{nom1} / h_{nom2} / h_{nom3}$	Max. thickness of fixture $t_{fix1} / t_{fix2} / t_{fix3}$	Packing Unit
400 010 060	TSM 10x60 SW 15 ZFC	65mm / - / -	55mm / - / -	5mm / - / -	50
400 010 070	TSM 10x70 SW15 ZFC	65mm / - / -	55mm / - / -	15mm / - / -	50
400 010 080	TSM 10x80 SW15 ZFC	65mm / 85mm / -	55mm / 75mm / -	25mm / 5mm / -	50
400 010 090	TSM 10x90 SW15 ZFC	65mm / 85mm / 95mm	55mm / 75mm / 85mm	35mm / 15mm / 5mm	50
400 010 100	TSM 10x100 SW15 ZFC	65mm / 85mm / 95mm	55mm / 75mm / 85mm	45mm / 25mm / 15mm	50
400 010 120	TSM 10x120 SW15 ZFC	65mm / 85mm / 95mm	55mm / 75mm / 85mm	65mm / 45mm / 35mm	50
400 010 140	TSM 10x140 SW15 ZFC	65mm / 85mm / 95mm	55mm / 75mm / 85mm	85mm / 65mm / 55mm	50
400 010 150	TSM 10x150 SW15 ZFC	65mm / 85mm / 95mm	55mm / 75mm / 85mm	95mm / 75mm / 65mm	50
400 010 160	TSM 10x160 SW15 ZFC	65mm / 85mm / 95mm	55mm / 75mm / 85mm	105mm / 85mm / 75mm	50
400 010 180	TSM 10x180 SW15 ZFC	65mm / 85mm / 95mm	55mm / 75mm / 85mm	125mm / 105mm / 95mm	25
400 010 200	TSM 10x200 SW15 ZFC	65mm / 85mm / 95mm	55mm / 75mm / 85mm	145mm / 125mm / 115mm	25
400 010 240	TSM 10x240 SW15 ZFC	65mm / 85mm / 95mm	55mm / 75mm / 85mm	185mm / 165mm / 155mm	25
400 010 280	TSM 10x280 SW15 ZFC	65mm / 85mm / 95mm	55mm / 75mm / 85mm	225mm / 205mm / 195mm	25
400 010 320	TSM 10x320 SW15 ZFC	65mm / 85mm / 95mm	55mm / 75mm / 85mm	265mm / 245mm / 235mm	25
400 010 360	TSM 10x360 SW15 ZFC	65mm / 85mm / 95mm	55mm / 75mm / 85mm	305mm / 285mm / 275mm	25
400 010 400	TSM 10x400 SW15 ZFC	65mm / 85mm / 95mm	55mm / 75mm / 85mm	345mm / 325mm / 315mm	25
400 012 080	TSM 12x80 SW17 ZFC	75mm / - / -	65mm / - / -	15mm / - / -	25
400 012 110	TSM 12x110 SW17 ZFC	75mm / 95mm / 110mm	65mm / 85mm / 100mm	45mm / 25mm / 10mm	25
400 012 130	TSM 12x130 SW17 ZFC	75mm / 95mm / 110mm	65mm / 85mm / 100mm	65mm / 45mm / 30mm	25
400 012 150	TSM 12x150 SW17 ZFC	75mm / 95mm / 110mm	65mm / 85mm / 100mm	85mm / 65mm / 50mm	25
400 014 080	TSM 14x80 SW21 ZFC	85mm / - / -	75mm / - / -	5mm / - / -	25
400 014 110	TSM 14x110 SW21 ZFC	85mm / 110mm / -	75mm / 100mm / -	35mm / 10mm / -	25
400 014 130	TSM 14x130 SW21 ZFC	85mm / 110mm / 125mm	75mm / 100mm / 115mm	55mm / 30mm / 15mm	25
400 014 150	TSM 14x150 SW21 ZFC	85mm / 110mm / 125mm	75mm / 100mm / 115mm	75mm / 50mm / 35mm	25