

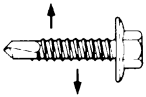
EJOT SAPHIR® Self-Drilling WDLS Range

Ultimate Fastener Tensile



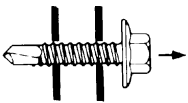
Fastener Dia	kN
5.5 x L	12.5

Ultimate Fastener Shear Strength



Fastener Dia	kN
5.5 x L	8.9

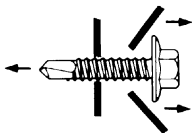
Ultimate Pullout Load kN



Fastener Dia	Steel Thickness (mm)						
	1.50	1.75	2.00	2.25	2.50	2.75	3.00
5.5 x L	3.60	4.38	5.19	5.80	6.51	7.26	7.98

Figures based on tests from steel up to 3.0 mm thick designated as Grade Z28, minimum yield strength

Ultimate Pullover Load kN

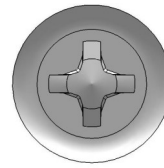


Washer Face	Pull through of Countersunk Head from Construction Grade Timber SC3 (kN)
WDHS 65/85/119	5.00

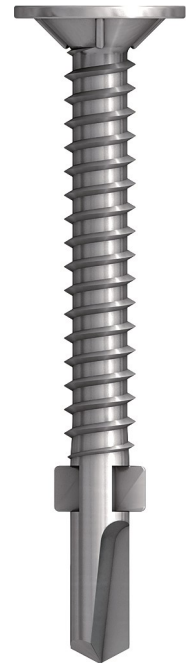
Figures based on tests from construction grade timber and are average figures from pulls made from different surfaces relevant to grain of

Material Specification

High quality grade casehardened carbon steel to Din standard 10666.
Corrosion resistance finish in 'Climadur' organic coating.



5.5mm Ø P3 Recess



Figures above are based on results obtained from tests carried out in our Applitec lab in accordance with equipment conforming to BS 5427 on a random sample of fasteners manufactured to EJOT tolerances. Information supplied should form part of a general guide and should performance data for a specific application be required please do not hesitate to contact us.

EJOT UK Limited Sherburn-in-Elmet, Leeds LS25 6PB.

Tel: 01977 687040 Fax: 01977 687041

www.ejot.co.uk info@ejot.co.uk

EJOT The Quality Connection